

RENOVN



COMBO FLATBEDS

FLATBEDS
DROP DECKS
B-TRAINS



LODE KING



—
**LODE KING.
IT'S ALL IN THE
DETAILS.**



FLATBEDS / COMBO FLATBEDS

01_ CAMBERED MAIN BEAM

Camber is built into the trailer's main beam to offset beam deflection under load.

02_ ALUMINUM KNEE BRACES

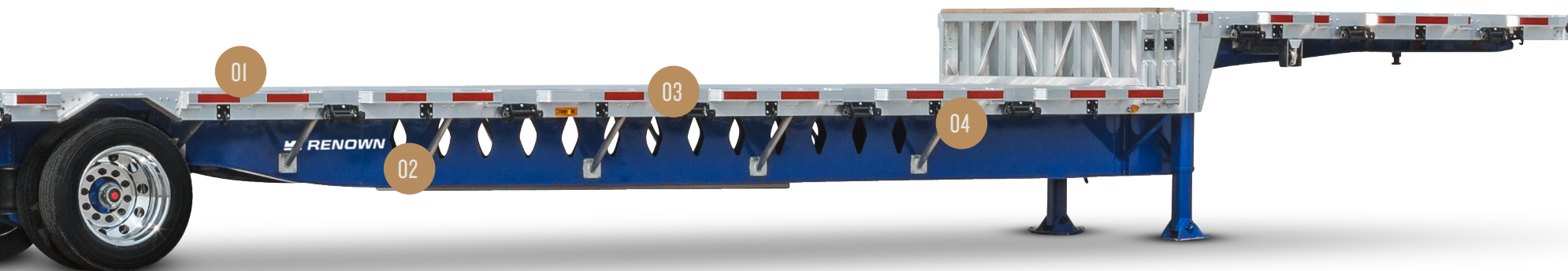
Tubular aluminum knee braces are set at 48" OC with closer spacing options available.

03_ ALUMINUM RUB RAIL

The aluminum rub rail has an outer surface recess to house and protect conspicuity tape.

04_ CROSSMEMBER CONNECTION

Each 4" aluminum crossmember connects to the main beam via a mount. This method of connection transfer the weight of the load directly to the back-bone of the trailer.



FLATBED



Min. 34', Max. 52'6"

| DIMENSIONS | | | |
|---------------------|--|----------------|-------------------------------------|
| LENGTH | Customer Spec. (Min. 34', Max. 52'6") | COUPLER HEIGHT | Customer Spec. (Min. 46", Max. 52") |
| WIDTH | Standard 102" Overall | KING PIN | Customer Spec. (Min. 18", Max. 42") |
| GOOSENECK WEB DEPTH | Standard 9 ½"; 7 ½" and 8 ½" Options Available | | |
| SUSPENSIONS | Tandem Fixed, Tandem with Front or Rear Sliding Axle, Tandem Full Sliding, Tri-Axle Fixed, Tri-Axle Full Sliding, Quad Steerable Ontario SPIF, West Coast Quad | | |

DROP DECK



Min. 42', Max. 53'

| DIMENSIONS | | | |
|---------------------|--|----------------|--|
| LENGTH | Customer Spec. (Min. 42', Max. 52'6") | COUPLER HEIGHT | Customer Spec. (Min. 46", Max. 52") |
| WIDTH | Standard 102" Overall | KING PIN | Customer Spec. (Min. 18", Max. 42") |
| GOOSENECK WEB DEPTH | Standard 9 ½"; 7 ½" and 8 ½" Options Available | DECK HEIGHT | Standard 41", Optional 39 ½", 35", 33 ½" |
| SUSPENSIONS | Tandem Fixed, Tandem with Front or Rear Sliding Axle, Tri-Axle Fixed | | |

B-TRAIN



28' / 32'

32' / 28'

| DIMENSIONS | | | |
|---------------------|--|----------------|--|
| LENGTH | 28' Lead & 32' Pull or 32' Lead & 28' Pull | COUPLER HEIGHT | Customer Spec. (Min. 46", Max. 52") |
| WIDTH | 102" Overall | KING PIN | Customer Spec. (Typical 36" on Lead, 24" on Pull); Other options available |
| GOOSENECK WEB DEPTH | Standard 8 1/4"; Optional 7 1/2" | | |



—
TRUSTED FOR
MILLIONS OF
MILES.

—
**NO
COMPROMISE.**



 **RENOWN**

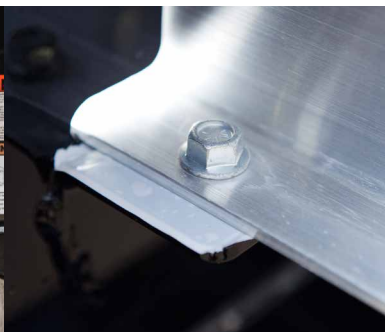


STANDARD FEATURES



AIR GAUGE BOX

The dump valve and air gauge is enclosed in an aluminum box with window.



ALUMINUM AND STEEL BARRIER

Provides a protective layer between the dissimilar metals.



ALUMINUM BOLSTERS

The front bolster includes stake pockets and rub rail. The rear bolster also has integrated stake pockets. Dock bumpers are mounted on the rear corners of the trailer.



CARGO SECUREMENT

The certified cargo securement devices conform to CMVSS 905.



CERTIFIED REAR IMPACT GUARD

Meets or exceeds US DOT and Transport Canada rear impact guard regulations.

OPTIONAL FEATURES



ALUMINUM FILL PLATE

Aluminum fill plate in bumper with Lode King logo.



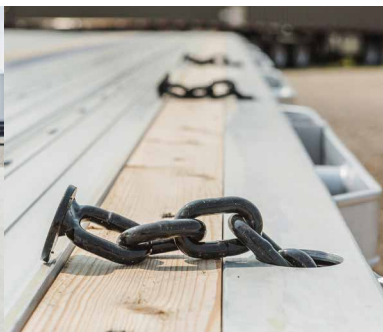
AXLE CHAIN SLINGS

Prevent air bags and shock absorbers becoming overextended.



BOLT-ON BUMPER

The optional bolt-on rear impact guard meets or exceeds all regulatory requirements of both US DOT and Transport Canada.



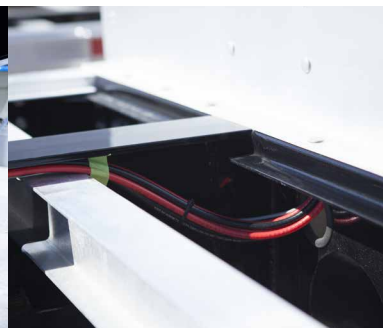
CHAIN PULL-OUT

The chain pull-out is located in the outside rail, providing maximum floor space while still allowing access to the chain tie-downs.



COIL PACKAGE

The addition of stub crossmembers between the main beams in specific locations underneath the hardwood floor provides the support operators require when hauling concentrated loads.



HIGH TENSILE STEEL FLANGES

5" wide, 130 KSI grade high-tensile steel is used for both top and bottom flanges.

HUCK BOLTS

Huck bolts are used extensively throughout the trailer.

IN-LINE AIR FILTER

The in-line air filter protects the air system from road debris build-up. The filter is serviceable and replaceable. Extends the duration of the ABS warranty.

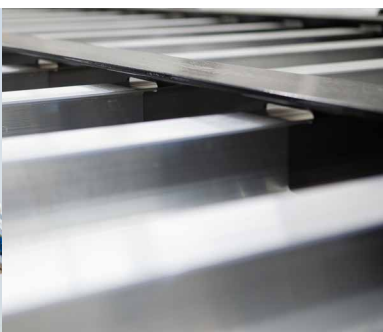
LANDING GEAR SUPPORT

Each landing gear leg is braced in multiple directions, providing exceptional stability.

PLUMBING & WIRING

Air and electrical lines from the front of the trailer are routed between the crossmembers and flanges to provide additional protection against damage.

[VIEW ALL OPTIONS AT LODEKING.COM](http://LODEKING.COM)



COUPLER PLATE

Optional 5/16" or 3/8" plates available. (Optional steel front bolster shown)

CROSSMEMBER SPACING

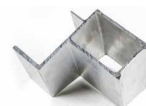
Additional crossmembers spaced at 12" OC increase the overall strength of the floor area and increase the rigidity of the trailer.

DISC BRAKES

Hendrickson MAXX22T air disc brakes.

JP SIDE RAIL

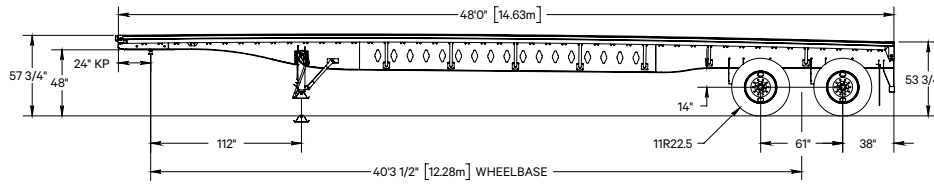
Extruded aluminum tubing side rail featuring integrated fixed winches and J-hooks. Also features a recessed rub rail which protects the conspicuity tape and LED lights.



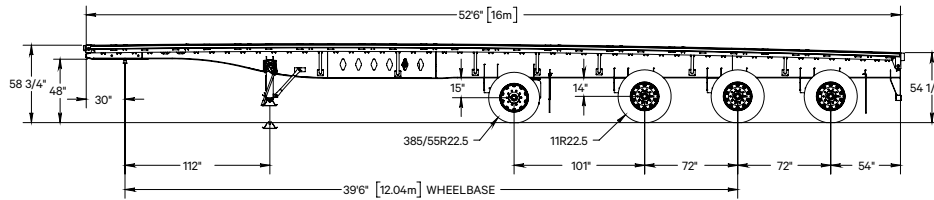
STEEL FRONT & REAR BOLSTERS

The front bolster includes stake pockets and rub rail. The rear bolster also has integrated stake pockets. Tail lights are protected inside a full-width recess.

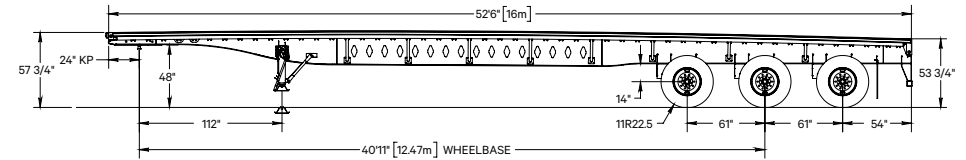
48' TANDEM



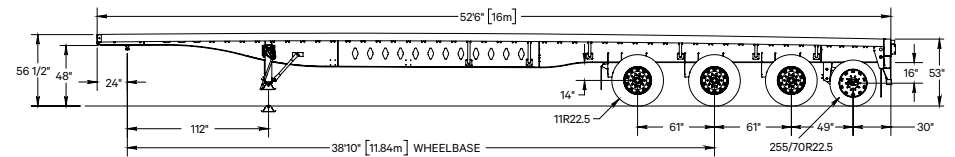
53' QUAD STEERABLE ONTARIO SPIF



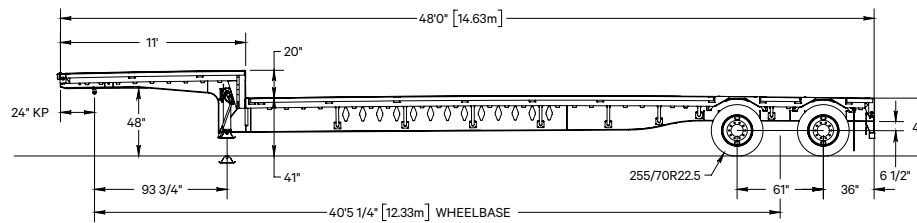
53' TRI-AXLE



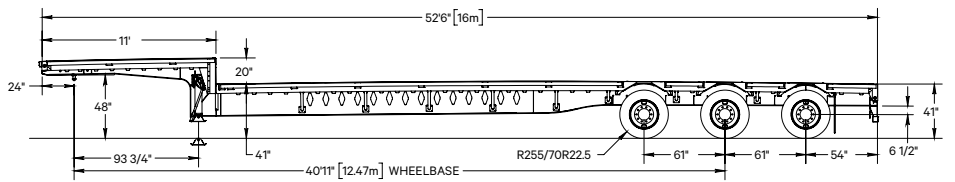
53' WEST COAST QUAD



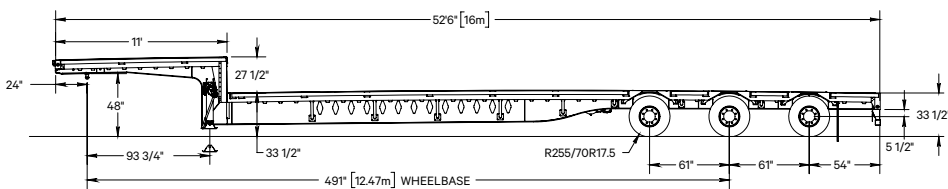
48' TANDEM



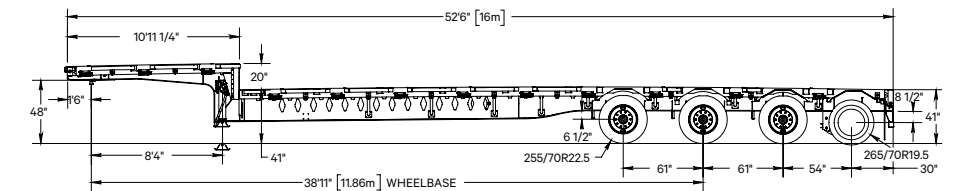
53' TRI-AXLE



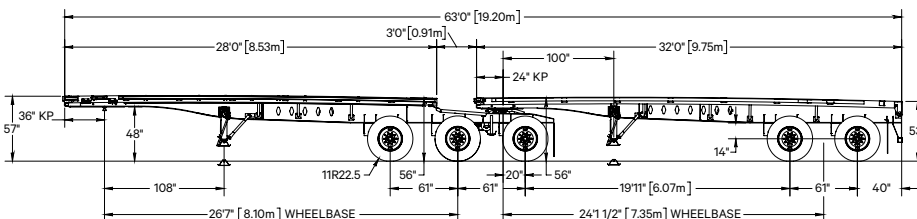
53' TRI-AXLE LOW DECK



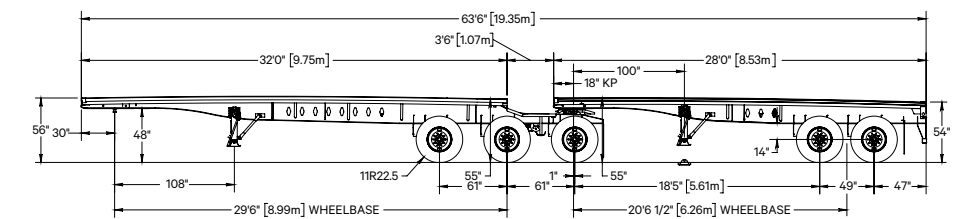
53' QUAD



28' LEAD & 32' PULL



32' LEAD & 28' PULL



BODY STRUCTURE

| | |
|--------------------------|--|
| BOLSTER - FRONT | Aluminum Extrusion with Four External Mount Stake Pockets; Other Options Available |
| BOLSTER - REAR | Flatbeds & Drop Decks - Aluminum Extrusion with Four Integral Stake Pockets, Standard B5500 Dock Bumpers; B-Trains - Formed Steel with Four Integral Stake Pockets on Lead; Extruded Aluminum on Pull; Other Options Available |
| BUMPER | Certified Rear Impact Guard - Meets or Exceeds all Transport Canada and US DOT Regulatory Requirements; Other Options Available |
| COUPLER PLATE | Standard ¼"; Other Options Available |
| CROSSMEMBERS | 4" Aluminum Extrusion @ 12" OC; Other Options Available |
| FLANGES | Grade 130 KSI High Tensile Steel, ¾" or ½" x 5" Depending on Application |
| FLOOR | Standard 1 5/16" Fir; 1 5/16" Hardwood or 1 5/16 Aluminum c/w nailer strips available |
| KNEE BRACES | Aluminum Tubing @ 48" OC; Other Options Available |
| LIGHTING | Seven Wire Connector at Front; Truck-Lite LED Lighting Standard; Lifetime Warranty Lamps; Truck-Lite Wiring Harness; Other Options Available |
| LOAD SECUREMENT | Various Fixed or Sliding Winches, Barrel or Three-Bar Style, J-Hooks, and Others - All Tested to Meet Current Load Securement Regulations |
| MAIN BEAM PROFILE | Standard Cambered Design; Other Options Available |
| MUD FLAPS | Heavy Duty, Black Rubber, Anti-Spray, Anti-Sail |
| OTHER | Conspicuity Treatment - Complies with All Regulatory Requirements |
| PAINT | Three-Stage Paint Process Consisting of a Coating of Zinc, Urethane Primer and Top Coat |
| RUB RAIL | Aluminum Extrusion with Recess for Conspicuity Tape |
| SIDE RAIL | 6" Aluminum Extrusion Channel on Platform; 7" on Step Deck; Other Options Available |
| STAKE POCKETS | Aluminum, External Mount, 48" Spacing, Two Pipe Spools between Pockets; Other Options Available |
| WEB | Grade 80 KSI High Tensile Steel in High Stress Locations, Grade 50 in Less Critical Areas |

RUNNING GEAR

| | |
|-------------------------------|--|
| ABS BRAKES | Meritor Wabco, Various Configurations Available, All Meet Transport Canada Regulations |
| BRAKE DRUMS | Standard Cast, Outboard Mount; Other Options Available |
| BRAKE LINING | HXS-H23 Extended Service |
| HUBS | Standard Cast, Hub-Piloted, 10-Stud Unimount, Oil Lubricated; Other Options Available |
| KING PIN | Holland |
| LANDING GEAR | Holland Mark V with 2-Speed Gear Drive; Other Options Available |
| SLACKS | Haldex S-ABA |
| SUSPENSION & AXLES | Hendrickson INTRAAX; Other Options Available |
| TIRES | Wide Range of Michelin, BF Goodrich and Bridgestone Products Available |
| WHEEL SEALS | National |
| WHEELS | Standard White Steel; Other Options Available |

WITH YOU FOR THE LONG HAUL.

FOR MORE THAN 35 YEARS, LODE KING INDUSTRIES HAS BEEN MANUFACTURING THE FINEST TRAILERS ON THE ROAD. FROM GRAIN TRAILERS AND FLATBEDS TO SPECIALIZED-APPLICATION TRAILERS, LODE KING'S ATTENTION TO QUALITY AND CUSTOMER CARE SIMPLY CAN'T BE MATCHED.



SOLID FOUNDATION

We've been proud to call Winkler, Manitoba home since 1980. Lode King has grown from humble beginnings to become Western Canada's leading commercial trailer manufacturer. We're building on that foundation, continually growing and innovating as our products take on new challenges year after year. Commitment to these founding principles and our dedication to future growth underpin our company's culture and products.



MADE IN CANADA

Lode King understands our country's diverse and sometimes harsh landscape. From the majestic Rockies to the big-sky prairies, we're honoured to be Western Canada's largest commercial trailer manufacturer. Our trailers are built to withstand Canada's ever-changing, severe climates, while our dealer network conveniently spans coast to coast, serving our customers with a wide variety of product options.



CRAFTSMANSHIP

Built tough, our no-compromise quality standards are unmatched in the transport trailer industry. Manufacturing within ISO 9001 international standards, we source and use the best materials available, from initial production steps to final finishing. Our goal is always to build a trailer that's engineered to last, whatever our customers put it through. Every trailer is inspected and certified for quality assurance.



PROUD CUSTOMERS

Lode King trailers are built for drivers who demand more in terms of style, technology, durability and features. Our customers head out on the open road with a sense of pride and have become our ambassadors at large. We never forget that every trailer has our name on it, so we maintain and value the relationships we've formed with fleet operators over the past 35-plus years.



CUTTING EDGE TECHNOLOGY

The latest in automated laser cutting, bending and welding technologies provide the precision and consistency needed to produce top quality components. It's innovative tools like these that help push our products to new heights and make our vision to create the best trailer possible a reality. In our world-class paint facility we also push the boundaries of the transport industry's finishing standards.



LONG TERM RELIABILITY

Long term in our industry means more to Lode King than we can possibly convey. Our unwavering quest to produce the highest quality trailers has turned into decades of success for our customers. Knowing our durable trailers will withstand heavy use for years to come helps our customers purchase in total confidence. Our premium quality product means minimal downtime, which leads to more time out on the road, getting the job done.



PROUD, DEDICATED AND LOYAL TEAM

Pride, dedication and loyalty are just part of what drives the team at Lode King Industries. We are committed to maintaining one of the cleanest and safest workspaces around, and place a high level of importance on training and development. This means that our employees are able to develop their skills, which provides both security and opportunities for career development within our growing company.



CUSTOMER SERVICE: A LODE KING PRIORITY

We know exactly how important communication is when you're miles away from home. Technology and customer relations play a large role in how we provide solid service before, during, and after your purchase. As an integrated customer service team working together with our dealer network, we work hand-in-hand with our customers, pro-actively meeting their needs and maintaining the pride they feel in pulling a Lode King trailer.

LODE KING

BOX 1146, 135 CANADA ST
WINKLER, MB, CANADA, R6W 4B2

PHONE 204-325-4345
FAX 204-325-5369

LODEKING.COM

Lode King Industries is a division of Triple E Canada Ltd. Product improvement is an ongoing process at Lode King Industries. Thus we reserve the right to change any specifications or components on any specifications or components on any or all products without prior notice; errors or omissions excepted. Lode-King Industries is under no obligation to undertake modifications to units manufactured prior to changes in specifications. Printed in Canada. 06/17.

