

PRESTIGE



STEEL HOPPERS

TANDEM
TRI-AXLE
SUPER-B



LODE KING



—
**LODE KING.
IT'S ALL IN THE
DETAILS.**



HOPPER / PRESTIGE SERIES

01_
SLOPE SHEET ANGLES

With a minimum of 30° slopes, hoppers easily clean out without the need to sweep.

02_
HOPPER CLEARANCE

High hopper clearance allows for various sizes of swing-away augers to be used during unloading for maximum flexibility.

03_
CHUTE OPENING SIZE

The 16" × 24" chute enables quick discharge, as well as a controlled rate of flow into an unloading auger.

04_
WALL CORRUGATION

A three-stage paint process consisting of a zinc coating, urethane primer and top coat keeps your trailer protected and looking great for years to come.



TANDEM



DIMENSIONS			
LENGTH	36' or 40'	KING PIN	24" Standard, 18" Optional
EXTERIOR WIDTH	102"	OVERALL HEIGHT	134" w/ 74" Wall, 137" w/ 77" Wall
INTERIOR WIDTH	98"	SLOPES	Minimum 30°
WALL HEIGHT	74" Standard, 77" Optional		

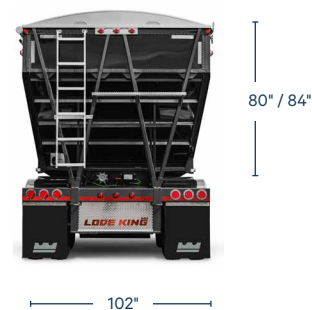


VOLUME (CU. FT.)	36' LENGTH		40' LENGTH	
WALL HEIGHT	74"	77"	74"	77"
WATER LEVEL	1570	1645	1730	1810
HEAPED	1680	1755	1860	1942

TRI-AXLE

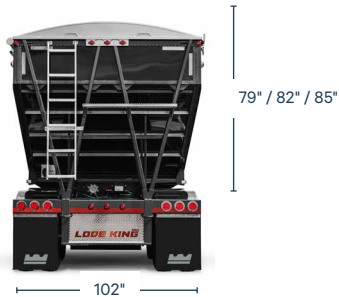


DIMENSIONS			
LENGTH	45' – 2 Hopper Standard; 45' – 3 Hopper Optional	KING PIN	2 Hopper – 15" Standard; 3 Hopper – 18" Standard
EXTERIOR WIDTH	102"	OVERALL HEIGHT	140" w/ 80" Wall, 144" w/ 84" Wall
INTERIOR WIDTH	98"	SLOPES	Minimum 29.5°
WALL HEIGHT	2 Hopper – 80" Standard w/ 84" Option; 3 Hopper – 80" Only		



VOLUME (CU. FT.)	2 HOPPER		3 HOPPER
WALL HEIGHT	80"	84"	80"
WATER LEVEL	1770	1880	1990
HEAPED	1930	2040	2156

SUPER-B



DIMENSIONS	
LENGTH	Lead 28'6", Pull 30' Standard; Lead 28'6", Pull 28'6" Option
EXTERIOR WIDTH	102"
INTERIOR WIDTH	97.75"
WALL HEIGHT	79" Standard; 82" or 85" Optional
KING PIN	Lead – 30" Standard, 24" Option; Pull – 15" Standard
OVERALL HEIGHT	142" w/ 82" Wall; 139" w/ 79" Wall; 145" w/ 85" Wall
SLOPES	Minimum 30°

VOLUME (CU. FT.)							
WALL HEIGHT		LEAD		PULL		TOTAL	
-	WATER LEVEL	HEAPED	WATER LEVEL	HEAPED	WATER LEVEL	HEAPED	
79"	1264	1373	1281	1396	2544	2769	
82"	1320	1430	1340	1456	2661	2885	
85"	1377	1487	1400	1515	2777	3002	
79"	1264	1360	1190	1299	2453	2659	
82"	1320	1436	1247	1356	2567	2792	
85"	1377	1512	1303	1412	2680	2924	

LEAD 28'6", PULL 30'

LEAD 28'6", PULL 28'6"



REFINED
PERFORMANCE.

—
**TRUSTED FOR
MILLIONS OF
MILES.**



 **PRESTIGE**





 **PRESTIGE**

LODE KING

LODE KING

STANDARD FEATURES



AIR & ELECTRICAL LINES

Each line is easily identifiable and easy to track. All lines are safely routed through side rails and secured front and back.



CHUTE CRANKS

High-mounted, angled chute cranks make access easier.



EXTRA-WIDE MUDFLAPS

Four-across, full coverage 102" wide mudflaps ahead of landing gear.



HENDRICKSON SUSPENSION

The Hendrickson INTRAAX air-ride suspension combines the axle and suspension as a fully integrated unit. The larger diameter 5 3/4" axle provides superior rigidity.



HOPPER ACCESS

The front and rear are equipped with ladders to provide access to each hopper. Interior steps allow the operator into the hopper and a ladder on either side of the divider wall allows movement between the hoppers.

OPTIONAL FEATURES



ALUMINUM FILL PLATE

Aluminum fill plate in bumper with Lode King logo.



AUXILIARY AIR SUPPLY

An auxiliary air chuck can be installed inside the air gauge box to supply air for a pneumatic vibrator. This handy outlet can also be used to bring tire pressure up to recommended PSI.



DUAL CHUTE OPENING

A second chute opening shaft and crank on the opposite side from the primary chute opening.



ELECTRIC REMOTE TARP OPENER

Electric wireless remote comes with a T210 handheld wireless remote control for opening your tarps along with a wall-mounted control box.



FRONT FENDER

The front fender protects the area above the king pin section from road grime and snow buildup.



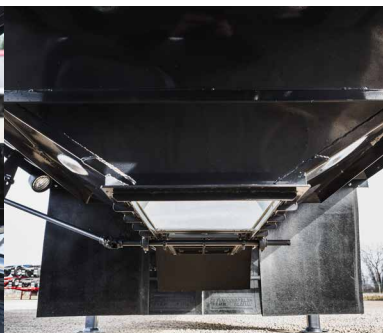
IN-LINE AIR FILTER

The in-line air filter protects the air system from road debris build-up. The filter is serviceable and replaceable. Extends the duration of the ABS warranty.



LOAD GAUGE ENCLOSURE

The easily accessible air gauge box is positioned above the fenders to protect it from flying road debris.



SELF-CLEANING CHUTE

The sliding track for the chute gate is designed to be self-cleaning. The chute itself slides past the fully open trap for complete clean-out.



TARP BOWS

The indented tarp bows prevent the tarp from wearing out where the built-in ridge pole crosses the roof bow.



UPPER COUPLER

The upper coupler design is one of the most robust in the industry.

[VIEW ALL OPTIONS AT LODEKING.COM](http://LODEKING.COM)



SIDEWALL VENTS

Vents allow air to flow into the trailer during unloading.



TIRE INFLATION SYSTEM

Hendrickson TIREMAAX PRO



TOW HOOKS

Tow hooks are welded into place as an integral part of the rear sub-frame assembly.



VIBRATOR BRACKETS

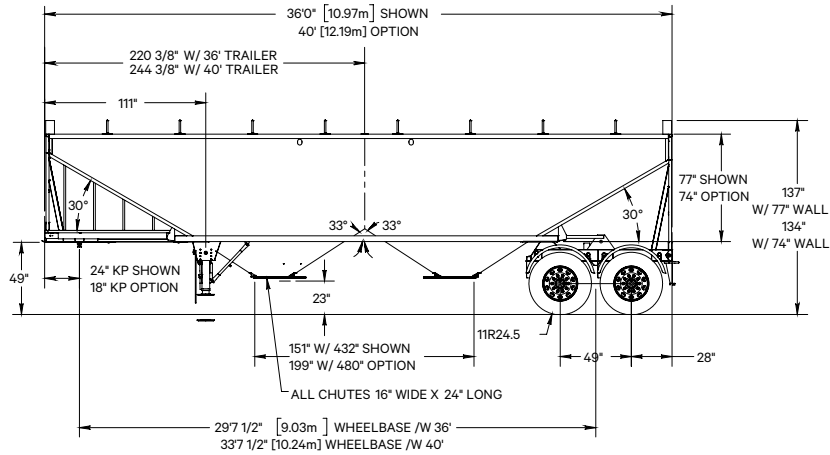
Vibrator brackets are mounted to the hopper.



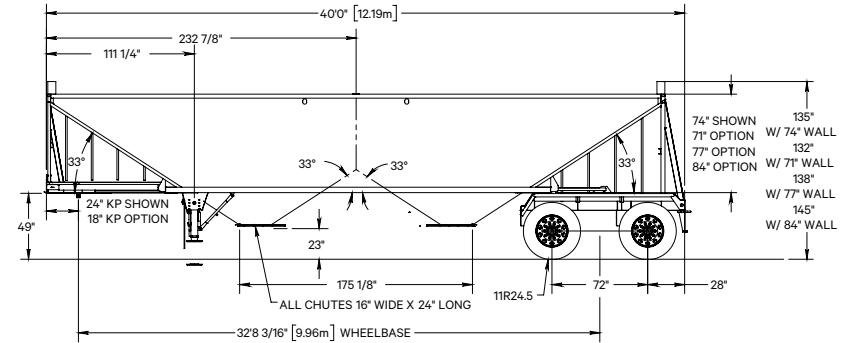
WHEELS

24.5" option available in aluminum or steel.

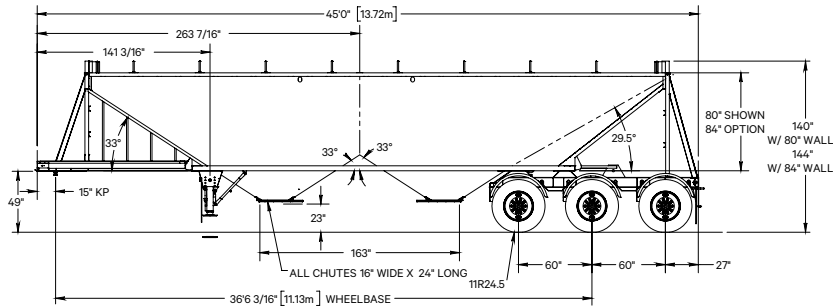
36' TANDEM



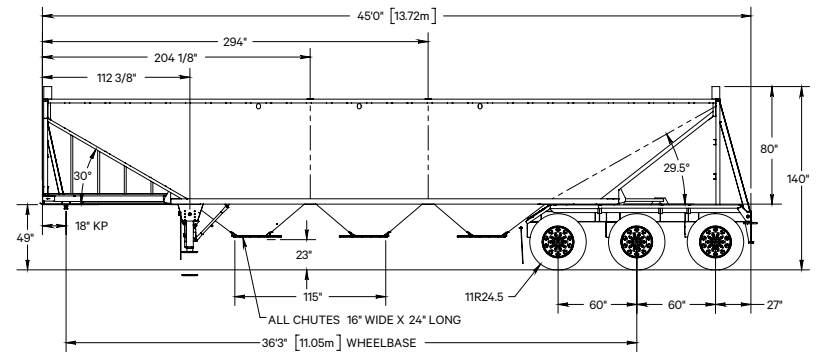
40' TANDEM



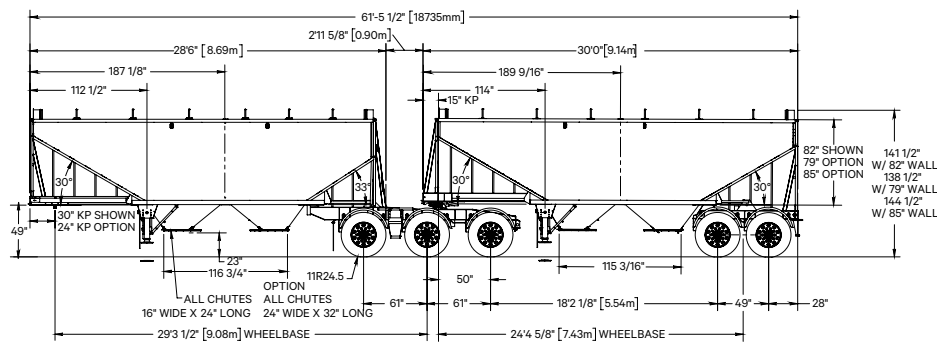
45' TRI-AXLE 2-HOPPER



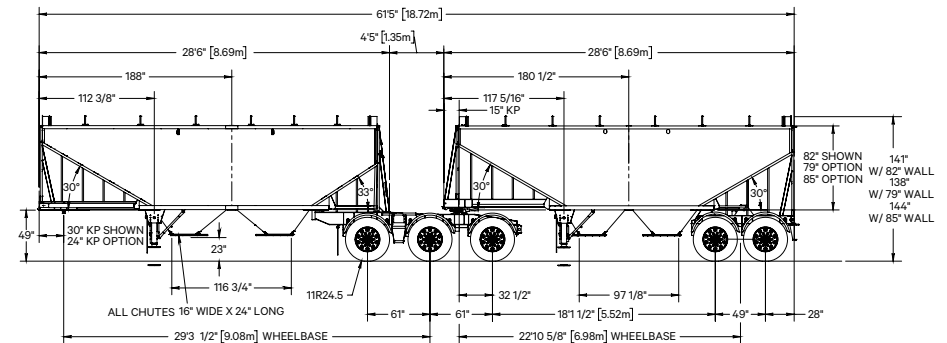
45' TRI-AXLE 3-HOPPER



28'6" LEAD & 30' PULL



28'6" LEAD & 28'6" PULL



BODY STRUCTURE

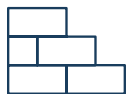
COUPLER	Holland Fifth Wheel Standard; Other Options Available
HOPPER CHUTES	Standard Opening Size – 24" Long x 16" Wide; Roadside Opener Standard; 23 ¼" Clearance (w/ 11Rx24.5 Rubber); Other Options Available
HOPPERS	14 Gauge Steel; Overlapped Corners; Two Rows of Stiffeners on All Sides; Full Height Steel Divider Wall between Hoppers; Other Options Available
LANDING GEAR	Holland Mark V, Two Speed
LIGHTING	Seven Wire Connector at Front; Truck-Lite LED Lighting Standard; Lifetime Warranty Lamps; Truck-Lite Wiring Harness; Other Options Available
MUD FLAPS	½" Rubber Anti-Sail Rear Flaps Standard; Other Options Available
PAINT	All Steel Components, Coupler Frame and Suspension Frame. Three-Stage Paint Process Consisting of a Coating of Zinc, Urethane Primer and Top Coat.
SIDE WALLS	Corrugated 16 Gauge Steel Side Walls w/ 14 Gauge in High Stress Areas; Other Options Available
SLOPES	Aluminum Slope Sheets – .063 Thickness, Available in Black, White or Unpainted; No Less than 29.5°
TARPS/TARP SUPPORTS	Michel's Roll Tarp, Reinforced over Roof Bows; Fiberglass Ridge Pole; Aluminum Roof Bows; Aluminum End Caps; Remote Openers; Other Options Available

RUNNING GEAR

AXLES	Hendrickson INTRAAX .31" Wall, 5 ¾" Round, 77 ½" Track, HN Spindle; Other Options Available
BRAKE SYSTEM	Air Drum Brake Standard; HXS-H23 Extended Service Linings Standard; Haldex 30/30 Gold Seal; Haldex S-ABA Slack 5 ½"; 28 Spline Standard; Meritor Wabco ABS Equipped; Other Options Available
FENDERS	Lode King Checkered Aluminum Flat Fenders; Other Options Available
HUBS	10 Stud HP Cast Hub/Cast Drum Standard; Other Options Available
SUSPENSION	Hendrickson INTRAAX AANT23K LDA Air Ride Standard; Air Gauge Mounted in an Aluminum Box c/w Window and Light; Other Options Available
TIRES	Michelin/BF Goodrich Standard; Other Options Available
WHEEL SEALS	National
WHEELS	22.5" Standard; Other Options Available

WITH YOU FOR THE LONG HAUL.

FOR MORE THAN 35 YEARS, LODE KING INDUSTRIES HAS BEEN MANUFACTURING THE FINEST TRAILERS ON THE ROAD. FROM GRAIN TRAILERS AND FLATBEDS TO SPECIALIZED-APPLICATION TRAILERS, LODE KING'S ATTENTION TO QUALITY AND CUSTOMER CARE SIMPLY CAN'T BE MATCHED.



SOLID FOUNDATION

We've been proud to call Winkler, Manitoba home since 1980. Lode King has grown from humble beginnings to become Western Canada's leading commercial trailer manufacturer. We're building on that foundation, continually growing and innovating as our products take on new challenges year after year. Commitment to these founding principles and our dedication to future growth underpin our company's culture and products.



MADE IN CANADA

Lode King understands our country's diverse and sometimes harsh landscape. From the majestic Rockies to the big-sky prairies, we're honoured to be Western Canada's largest commercial trailer manufacturer. Our trailers are built to withstand Canada's ever-changing, severe climates, while our dealer network conveniently spans coast to coast, serving our customers with a wide variety of product options.



CRAFTSMANSHIP

Built tough, our no-compromise quality standards are unmatched in the transport trailer industry. Manufacturing within ISO 9001 international standards, we source and use the best materials available, from initial production steps to final finishing. Our goal is always to build a trailer that's engineered to last, whatever our customers put it through. Every trailer is inspected and certified for quality assurance.



PROUD CUSTOMERS

Lode King trailers are built for drivers who demand more in terms of style, technology, durability and features. Our customers head out on the open road with a sense of pride and have become our ambassadors at large. We never forget that every trailer has our name on it, so we maintain and value the relationships we've formed with fleet operators over the past 35-plus years.



CUTTING EDGE TECHNOLOGY

The latest in automated laser cutting, bending and welding technologies provide the precision and consistency needed to produce top quality components. It's innovative tools like these that help push our products to new heights and make our vision to create the best trailer possible a reality. In our world-class paint facility we also push the boundaries of the transport industry's finishing standards.



LONG TERM RELIABILITY

Long term in our industry means more to Lode King than we can possibly convey. Our unwavering quest to produce the highest quality trailers has turned into decades of success for our customers. Knowing our durable trailers will withstand heavy use for years to come helps our customers purchase in total confidence. Our premium quality product means minimal downtime, which leads to more time out on the road, getting the job done.



PROUD, DEDICATED AND LOYAL TEAM

Pride, dedication and loyalty are just part of what drives the team at Lode King Industries. We are committed to maintaining one of the cleanest and safest workspaces around, and place a high level of importance on training and development. This means that our employees are able to develop their skills, which provides both security and opportunities for career development within our growing company.



CUSTOMER SERVICE: A LODE KING PRIORITY

We know exactly how important communication is when you're miles away from home. Technology and customer relations play a large role in how we provide solid service before, during, and after your purchase. As an integrated customer service team working together with our dealer network, we work hand-in-hand with our customers, pro-actively meeting their needs and maintaining the pride they feel in pulling a Lode King trailer.

LODE KING

BOX 1146, 135 CANADA ST
WINKLER, MB, CANADA, R6W 4B2

PHONE 204-325-4345

FAX 204-325-5369

LODEKING.COM

Lode King Industries is a division of Triple E Canada Ltd. Product improvement is an ongoing process at Lode King Industries. Thus we reserve the right to change any specifications or components on any specifications or components on any or all products without prior notice; errors or omissions excepted. Lode-King Industries is under no obligation to undertake modifications to units manufactured prior to changes in specifications. Printed in Canada. 06/17.

